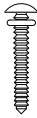


STEP 1 WHAT IS IN THE BOX :

MOUNTING SCREWS



X4

ANCHOR



X4

SECURITY SCREW WRENCH



X1

BACK FOCUS WRENCH



X1

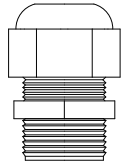
REQUIRED ↓

PHILLIPS HEAD SCREWDRIVER



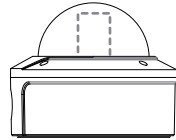
X1

GROMMET



X1

DOME CAMERA



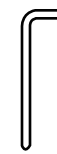
X1

*PART NUMBERS WITH -NL DENOTES NO LENS OPTION

STEP 2 REMOVING THE BUBBLE :

REQUIRED ↓

SECURITY SCREW WRENCH



X1



STEP 3 CONNECTIONS :

RF DIGITAL VIDEO OUTPUT

POWER



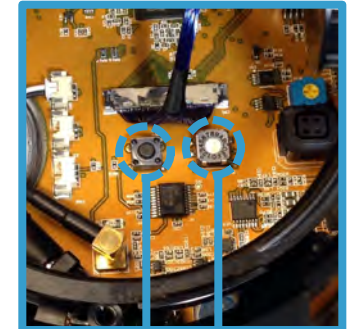
STEP 4 SWITCHING CHANNELS :

REQUIRED ↓

PHILLIPS HEAD SCREWDRIVER



X1



RESET

CHANNEL SELECTOR

